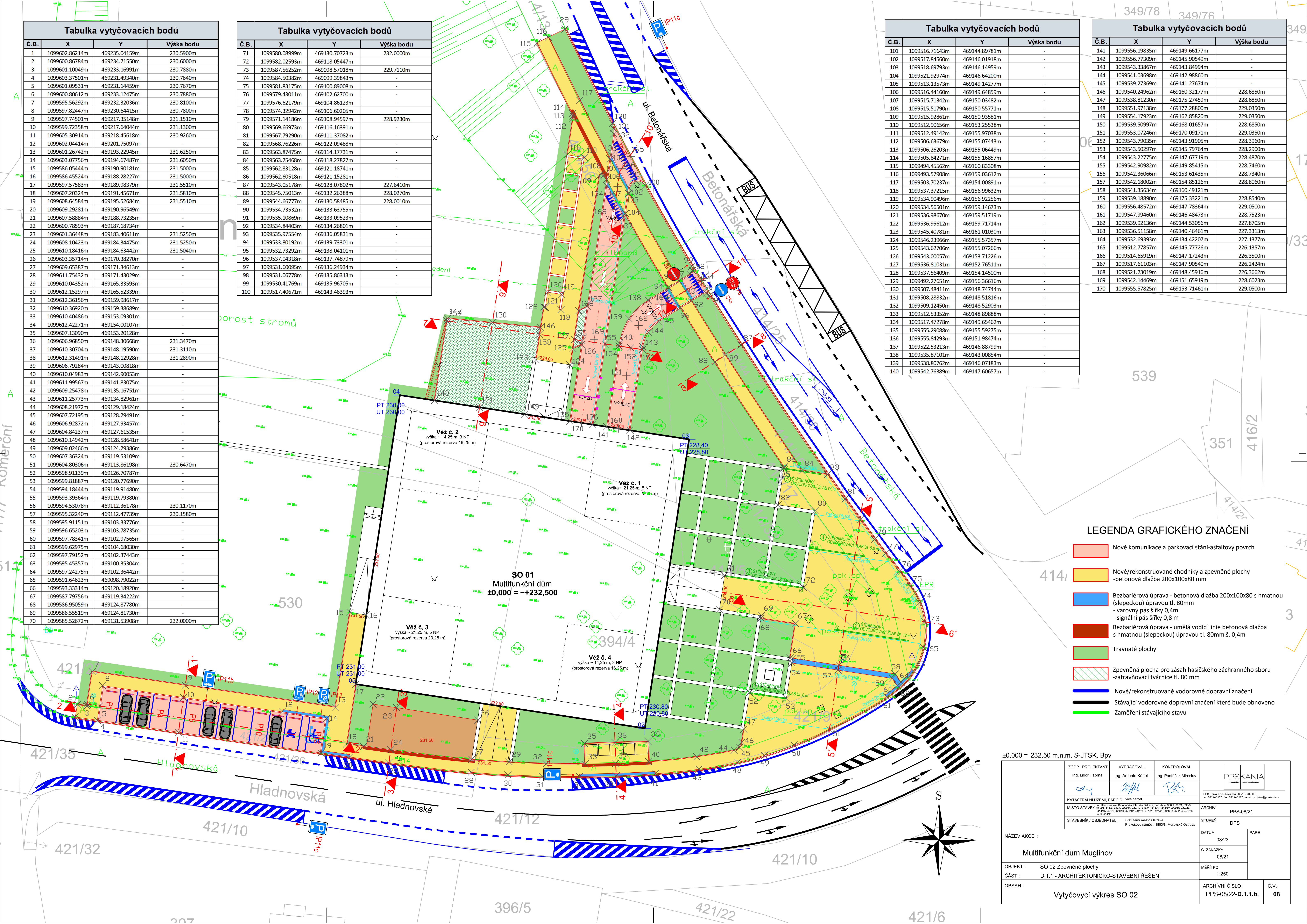


Tabulka vytyčovacích bodů			
Č.B.	X	Y	Výška bodu
1	1099602.86214m	469235.04159m	230.5900m
2	1099600.86784m	469234.71550m	230.6000m
3	1099601.10049m	469233.16991m	230.7880m
4	1099603.37501m	469231.49340m	230.7640m
5	1099601.09531m	469231.14459m	230.7670m
6	1099600.80612m	469233.12475m	230.7880m
7	1099595.56292m	469232.32036m	230.8100m
8	1099597.82447m	469230.64415m	230.7800m
9	1099597.74501m	469217.35148m	231.1510m
10	1099599.72358m	469217.64044m	231.1300m
11	1099605.30914m	469218.45618m	230.9260m
12	1099602.04414m	469201.75097m	-
13	1099601.26742m	469193.22945m	231.6250m
14	1099603.07756m	469194.67487m	231.6050m
15	1099586.05444m	469190.90181m	231.5000m
16	1099586.45524m	469188.28227m	231.5000m
17	1099597.57583m	469189.98379m	231.5510m
18	1099607.20324m	469191.45671m	231.5810m
19	1099608.64584m	469195.52684m	231.5510m
20	1099609.29281m	469190.96549m	-
21	1099607.58884m	469188.73235m	-
22	1099600.78593m	469187.18734m	-
23	1099601.36448m	469183.40611m	231.5250m
24	1099608.10423m	469184.34475m	231.5250m
25	1099610.18416m	469184.63442m	231.5040m
26	1099603.35714m	469170.38270m	-
27	1099609.65387m	469171.34613m	-
28	1099611.75432m	469171.43029m	-
29	1099610.04352m	469165.33593m	-
30	1099612.15297m	469165.52399m	-
31	1099612.36156m	469159.98617m	-
32	1099610.36920m	469159.38689m	-
33	1099610.40486m	469153.09301m	-
34	1099612.42271m	469154.00107m	-
35	1099607.13090m	469153.20128m	-
36	1099606.96850m	469148.30668m	231.3470m
37	1099610.30704m	469148.19590m	231.3110m
38	1099612.31491m	469148.12928m	231.2890m
39	1099606.79284m	469143.00818m	-
40	1099610.04983m	469142.90053m	-
41	1099611.99567m	469141.83075m	-
42	1099609.25478m	469135.16751m	-
43	1099611.25773m	469134.82961m	-
44	1099608.21972m	469129.18424m	-
45	1099607.72195m	469128.29491m	-
46	1099606.92872m	469127.93457m	-
47	1099604.84237m	469127.61535m	-
48	1099610.14942m	469128.58641m	-
49	1099609.02466m	469124.29386m	-
50	1099607.36324m	469119.53109m	-
51	1099604.80306m	469113.86198m	230.6470m
52	1099598.91139m	469126.70787m	-
53	1099599.81887m	469120.77690m	-
54	1099594.18444m	469119.91480m	-
55	1099593.39364m	469119.79380m	-
56	1099594.53078m	469112.36178m	230.1170m
57	1099595.32240m	469112.47739m	230.1580m
58	1099595.91151m	469103.33776m	-
59	1099596.65203m	469103.78735m	-
60	1099597.78341m	469102.97565m	-
61	1099599.62975m	469104.68030m	-
62	1099597.79152m	469102.37443m	-
63	1099595.45357m	469100.35304m	-
64	1099597.24275m	469102.36442m	-
65	1099591.64623m	469098.79022m	-
66	1099593.33314m	469120.18920m	-
67	1099587.79756m	469119.34222m	-
68	1099586.95059m	469124.87780m	-
69	1099586.55519m	469124.81730m	-
70	1099585.52672m	469131.53908m	232.0000m

Tabulka vytyčovacích bodů			
Č.B.	X	Y	Výška bodu
71	1099580.08999m	469130.70723m	232.0000m
72	1099582.02593m	469118.05447m	-
73	1099587.56252m	469098.57018m	229.7110m
74	1099584.50382m	469099.39843m	-
75	1099581.83175m	469100.89008m	-
76	1099579.43011m	469102.62700m	-
77	1099576.62179m	469104.86123m	-
78	1099574.32942m	469106.60205m	-
79	1099571.14186m	469108.94597m	228.9230m
80	1099569.66973m	469116.16391m	-
81	1099567.79290m	469111.37082m	-
82	1099568.76226m	469122.09488m	-
83	1099563.87475m	469114.17731m	-
84	1099563.25468m	469118.27827m	-
85	1099562.83128m	469121.18741m	-
86	1099562.60518m	469121.15281m	-
87	1099543.05178m	469128.07802m	227.6410m
88	1099545.75013m	469132.26388m	228.0270m
89	1099544.66777m	469130.58485m	228.0010m
90	1099534.73532m	469133.63755m	-
91	1099535.10869m	469133.09523m	-
92	1099534.84403m	469134.26801m	-
93	1099535.97554m	469136.05831m	-
94	1099533.80192m	469139.73301m	-
95	1099532.73292m	469138.04101m	-
96	1099537.04318m	469137.74879m	-
97	1099531.60095m	469136.24934m	-
98	1099531.06778m	469135.86313m	-
99	1099530.41769m	469135.96705m	-
100	1099517.40671m	469143.46393m	-




Tabulka vytyčovacích bodů			
Č.B.	X	Y	Výška bodu
101	1099516.71643m	469144.89781m	-
102	1099517.84560m	469146.01918m	-
103	1099518.69793m	469146.14959m	-
104	1099521.92974m	469146.64200m	-
105	1099513.13573m	469149.14277m	-
106	1099516.44160m	469149.64859m	-
107	1099515.71342m	469150.03482m	-
108	1099515.51790m	469150.55771m	-
109	1099515.92861m	469150.93581m	-
110	1099512.90656m	469153.25538m	-
111	1099512.49142m	469155.97038m	-
112	1099506.63679m	469155.07443m	-
113	1099506.26203m	469155.06449m	-
114	1099505.84271m	469155.16857m	-
115	1099494.45562m	469160.83308m	-
116	1099493.57908m	469159.03612m	-
117	1099503.70237m	469154.00891m	-
118	1099537.37215m	469156.99632m	-
119	1099534.90496m	469156.92256m	-
120	1099534.56501m	469159.14673m	-
121	1099536.98670m	469159.51719m	-
122	1099536.95612m	469159.71714m	-
123	1099545.40781m	469161.01030m	-
124	1099546.23966m	469155.57357m	-
125	1099543.62706m	469155.07226m	-
126	1099543.00057m	469153.71226m	-
127	1099536.81031m	469152.76511m	-
128	1099537.56409m	469154.14500m	-
129	1099492.27651m	469156.36616m	-
130	1099507.48411m	469148.74744m	-
131	1099508.28832m	469148.51816m	-
132	1099509.12455m	469148.52903m	-
133	1099512.53352m	469148.89888m	-
134	1099517.47278m	469149.65462m	-
135	1099555.29088m	469155.59275m	-
136	1099555.84293m	469151.98474m	-
137	1099522.53213m	469146.88799m	-
138	1099535.87101m	469143.00854m	-
139	1099538.80762m	469146.07183m	-
140	1099542.76389m	469147.60657m	-

Tabulka vytyčovacích bodů			
Č.B.	X	Y	Výška bodu
141	1099556.19835m	469149.66177m	-
142	1099556.77309m	469145.90549m	-
143	1099543.33867m	469143.84994m	-
144	1099541.03698m	469142.98860m	-
145	1099539.27369m	469141.27674m	-
146	1099540.24962m	469160.32177m	228.6850m
147	1099538.81230m	469175.27459m	228.6850m
148	1099551.97138m	469177.28800m	229.0350m
149	1099554.17923m	469162.85820m	229.0350m
150	1099539.50997m	469168.01657m	228.6850m
151	1099553.07246m	469170.09171m	229.0350m
152	1099543.79035m	469143.91905m	228.3960m
153	1099543.50297m	469145.79764m	228.2900m
154	1099543.22775m	469147.67719m	228.4870m
155	1099542.90982m	469149.85415m	228.7460m
156	1099542.36066m	469153.61435m	228.7340m
157	1099542.18002m	469154.85126m	228.8060m
158	1099541.35634m	469160.49121m	-
159	1099539.18890m	469175.33221m	228.8540m
160	1099556.48572m	469147.78364m	229.0500m
161	1099547.99460m	469146.48473m	228.7523m
162	1099539.92136m	469144.53056m	227.8705m
163	1099536.51158m	469140.46461m	227.3313m
164	1099532.69393m	469134.42207m	227.1377m
165	1099512.77857m	469145.77726m	226.1357m
166	1099514.65919m	469147.17243m	226.3500m
167	1099517.61103m	469147.90540m	226.2424m
168	1099521.23019m	469148.45916m	226.3662m
169	1099542.14469m	469151.65919m	228.6023m
170	1099555.57825m	469153.71461m	229.0500m



LEGENDA GRAFICKÉHO ZNAČENÍ

- Nové komunikace a parkovací stání-asfaltový povrch
- Nové/rekonstruované chodníky a zpevněné plochy -betonová dlažba 200x100x80 mm
- Bezbariérová úprava - betonová dlažba 200x100x80 s hmatnou (slepečkou) úpravou tl. 80mm - varovný pás šířky 0,4m - signální pás šířky 0,8 m
- Bezbariérová úprava - umělá vodící linie betonová dlažba s hmatnou (slepečkou) úpravou tl. 80mm š. 0,4m
- Travnaté plochy
- Zpevněná plocha pro zásah hasičského záchranného sboru -zatravnovací tvárnice tl. 80 mm
- Nové/rekonstruované vodorovné dopravní značení
- Stávající vodorovné dopravní značení které bude obnoveno
- Zaměření stávajícího stavu

±0,000 = 232,50 m.n.m, S-JTSK, BpV					
ZODP. PROJEKTANT		VYPRACOVAL	KONTROLOVAL	<div>PPSKANIA</div> <div>PPS Kania s.r.l., Návrhová 665/10, 700 00 tel. 0042 305 252, fax. 0042 305 252, e-mail. projekt@ppskania.cz</div>	
Ing. Libor Habrmál		Ing. Antonín Kufel	Ing. Pantůček Miroslav		
					
KATASTRÁLNÍ ÚZEMÍ, PARC.Č. více parcel				PPS Kania s.r.l., Návrhová 665/10, 700 00 tel. 0042 305 252, fax. 0042 305 252, e-mail. projekt@ppskania.cz	
MÍSTO STAVBY: 13846, 4104, 4145, 4147, 4147/2, 4147/3, 4147/4, 4147/5, 4147/6, 4147/7, 4147/8, 4147/9, 4147/10, 4147/11, 4147/12, 4147/13, 4147/14, 4147/15, 4147/16, 4147/17, 4147/18, 4147/19, 4147/20, 4147/21, 4147/22, 4147/23, 4147/24, 4147/25, 4147/26, 4147/27, 4147/28, 4147/29, 4147/30, 4147/31, 4147/32, 4147/33, 4147/34, 4147/35, 4147/36, 4147/37, 4147/38, 4147/39, 4147/40, 4147/41, 4147/42, 4147/43, 4147/44, 4147/45, 4147/46, 4147/47, 4147/48, 4147/49, 4147/50, 4147/51, 4147/52, 4147/53, 4147/54, 4147/55, 4147/56, 4147/57, 4147/58, 4147/59, 4147/60, 4147/61, 4147/62, 4147/63, 4147/64, 4147/65, 4147/66, 4147/67, 4147/68, 4147/69, 4147/70, 4147/71, 4147/72, 4147/73, 4147/74, 4147/75, 4147/76, 4147/77, 4147/78, 4147/79, 4147/80, 4147/81, 4147/82, 4147/83, 4147/84, 4147/85, 4147/86, 4147/87, 4147/88, 4147/89, 4147/90, 4147/91, 4147/92, 4147/93, 4147/94, 4147/95, 4147/96, 4147/97, 4147/98, 4147/99, 4148, 4149, 4150, 4151, 4152, 4153, 4154, 4155, 4156, 4157, 4158, 4159, 4160, 4161, 4162, 4163, 4164, 4165, 4166, 4167, 41				ARCHIV	PPS-08/21
STAVEBNÍK / OBJEDNATEL :		Státními město Ostrava Protektová nádrž 18038, Moravia Ostrava		STUPEŇ DPS	
NÁZEV AKCE :				DATUM	PARÉ
Multifunkční dom Muglinov				08/23	
				Č. ZAKÁZKY	
OBJEKT : SO 02 Zpevněné plochy				08/21	
ČÁST : D.1.1 - ARCHITEKTONICKO-STAVEBNÍ ŘEŠENÍ				1:250	
OBSAH :				ARCHIVNÍ ČÍSLO :	Č.v.
Vytýčovací výkres SO 02				PPS-08/22-D.1.1.b.	08